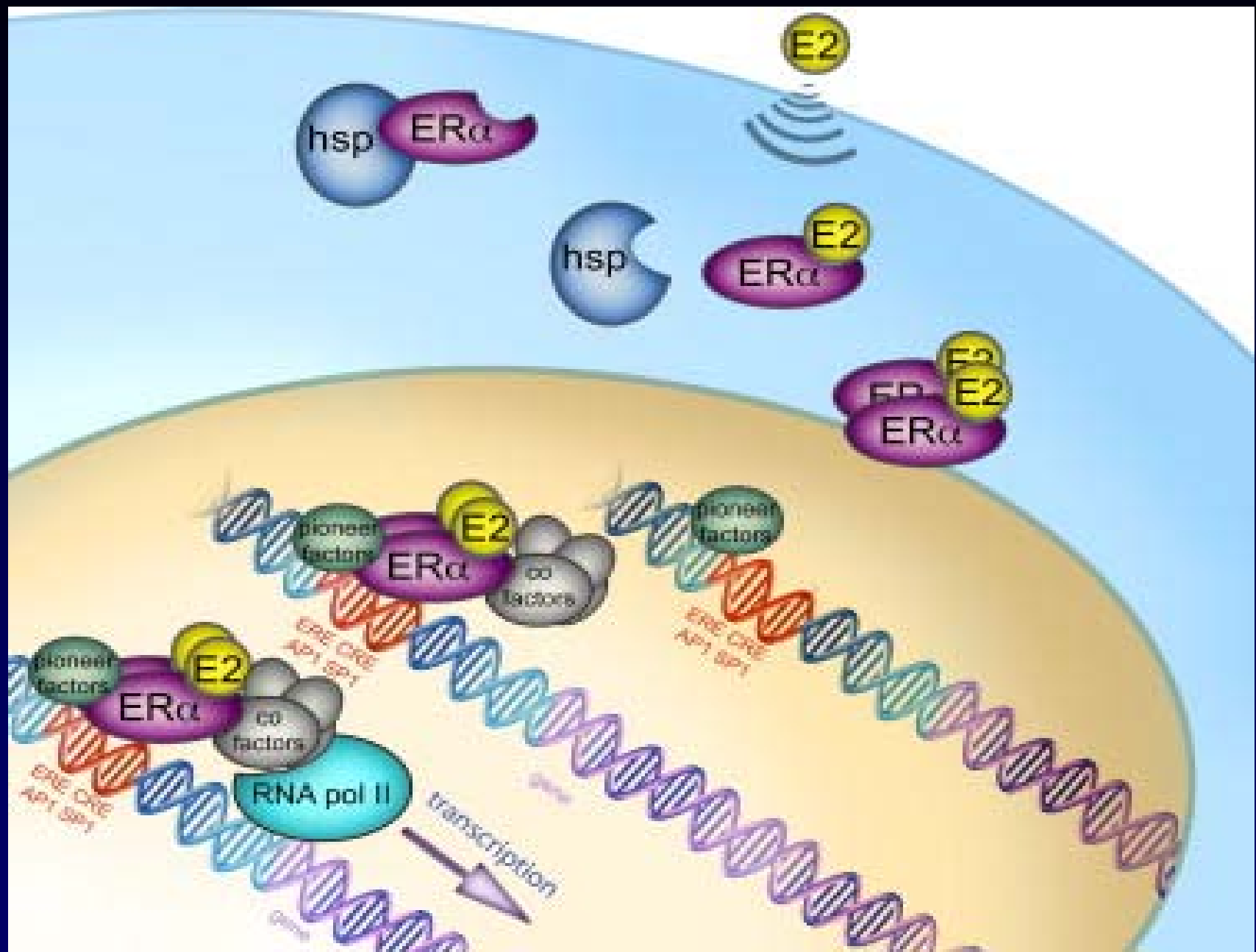
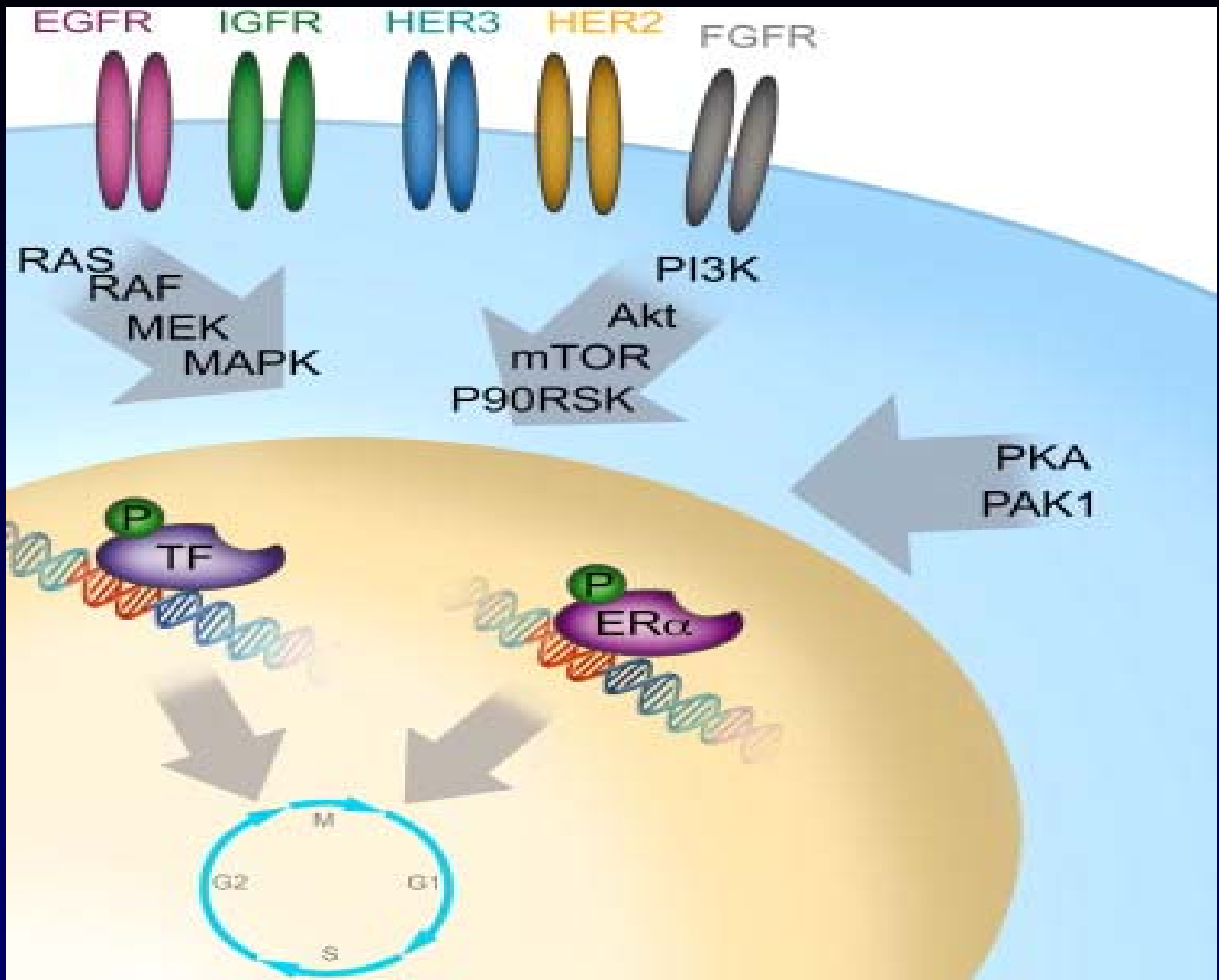
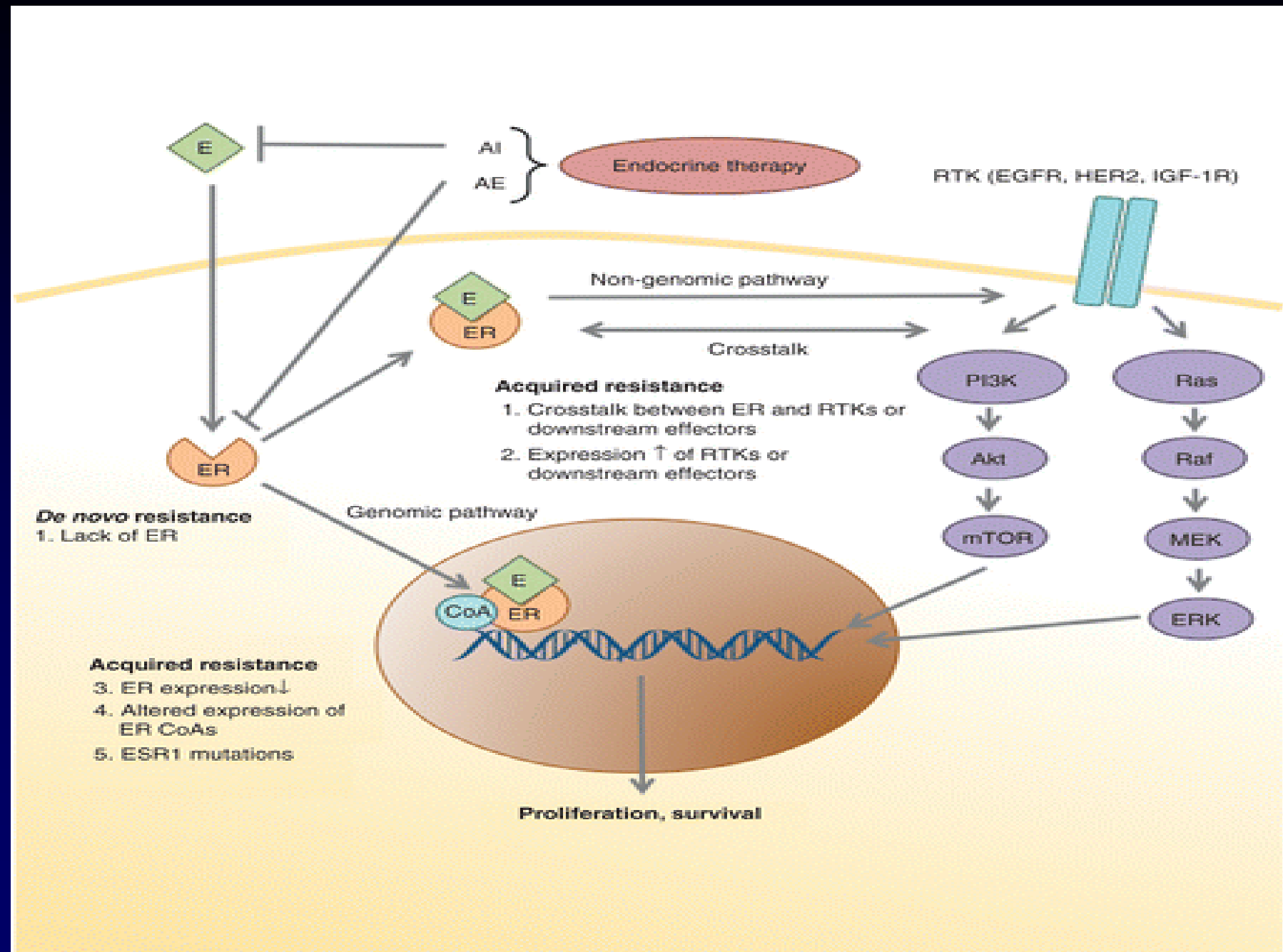


MEME KANSERİNDE ENDOKRİN TEDAVİ DİRENÇİ

**DR.YAVUZ ÖZİŞİK
HACETTEPE ÜNİVERSİTESİ ONKOLOJİ ENSTİTÜSÜ
MEDİKAL ONKOLOJİ BİLİM DALI**





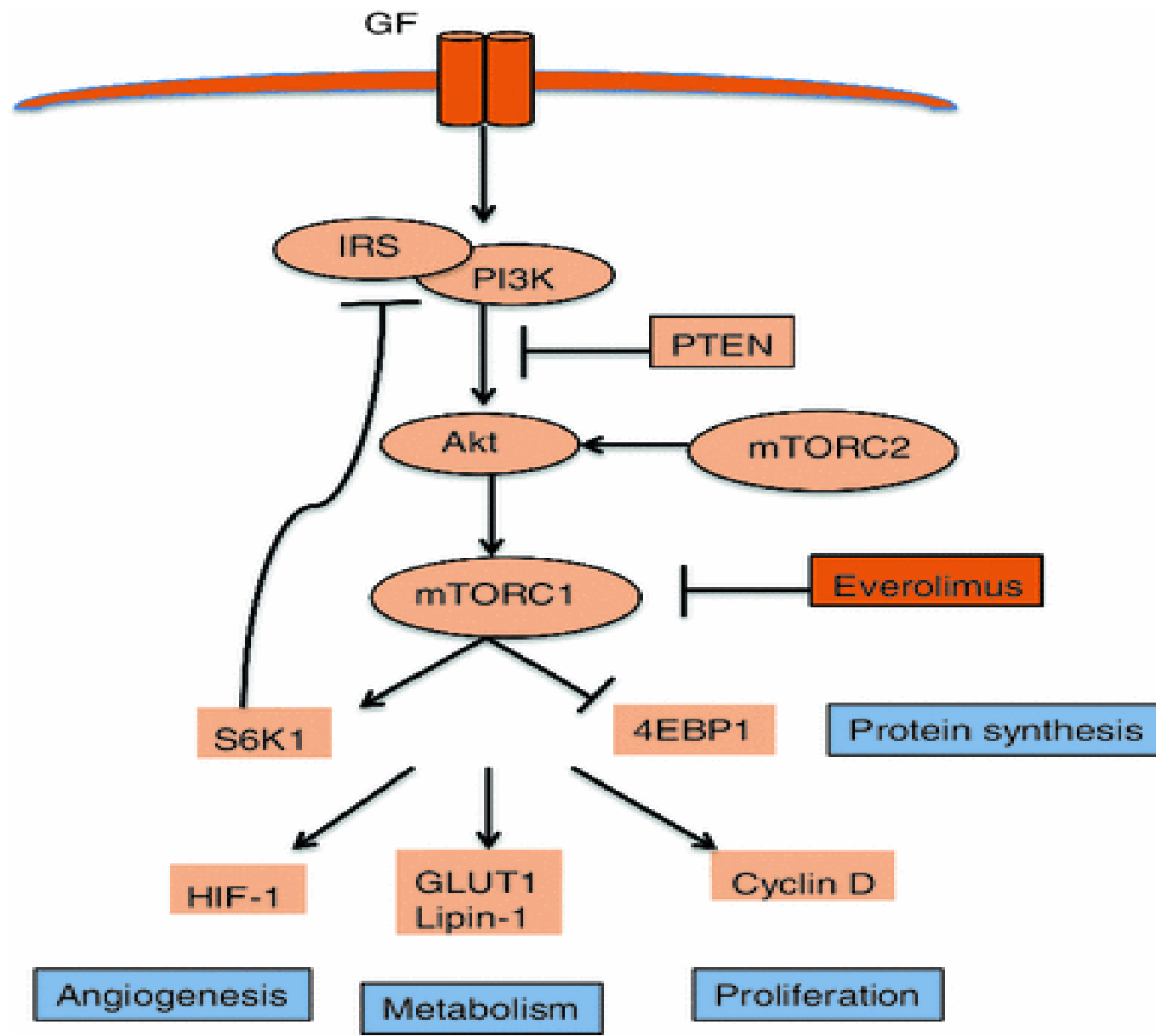


MMK'de HYT+HT

	Cristofanilli 2010		Osborne2011	
	Ana+Pla	Ana+Gef	Tam+Pla	Tam+Gef
N	50	43	101	105
CBR%	34	49	45.5	50.5
PFS mo	8.4	14.7*	8.8	10.9
OS mo	NR		NR	
HR	0.55 (%95 CI: 0.32-0.94)		0.84 (%95 CI: 0.59-1.18)	

HR+ MMK'de HYT+HT

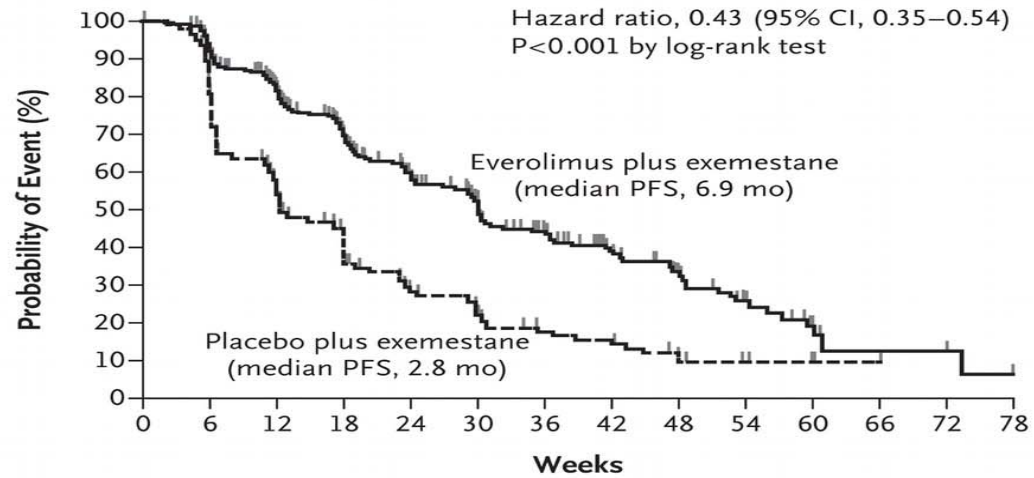
	Kaufman2009		Johnston 2009 _u	
	Ana	Ana+Tras	Let+Pla	Let+Lap
N	104	103	108	111
CBR%	27.9	42.7	29	48
PFS mo	3.8	5.6*	3.0	8.2*
OS mo	23.9	28.5		NR
HR	0.63 (%95 CI: 0.47-0.84)		0.71 (%95 CI: 0.53-0.96)	



mTOR Antagonists

Study	Phase	Arms	n	ORR%	med TTP/PFS mo	medOS mo
mTOR Antagonists						
TAMRAD	II RCT, with previous AI exposure	Everolimus + tamoxifen	54	61*	8.6*	NR
		Tamoxifen	57	42	4.5	24.0
BOLERO-2	III RCT, progressed on NSAI	Everolimus + exemestane	485	9.5*	6.9*	NR
		Exemestane	239	0.4	2.8	NR
HORIZON	III RCT, AI naive	Letrozole + temsirolimus	555	27	8.9	NR
		Letrozole + placebo	555	27	9.0	NR

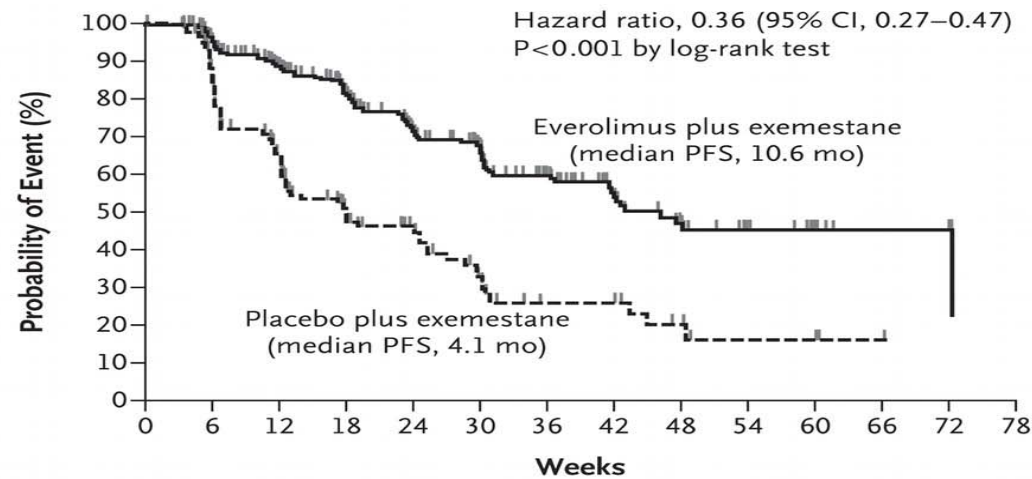
A Local Assessment



No. at Risk

Everolimus	485	398	294	212	144	108	75	51	34	18	8	3	3	0
Placebo	239	177	109	70	36	26	16	14	9	4	3	1	0	0

B Central Assessment



No. at Risk

Everolimus	485	385	281	201	132	102	67	43	28	18	9	3	2	0
Placebo	239	168	94	55	33	20	11	11	6	3	3	1	0	0

STI+ET

PI3K/AKT/MTOR

HDAC

VEGF/Angiogenesis

Proteasome (NF-kB yolu)

Src kinaz

FBGFR

İGF-1

CDK 4/6

MMK'de HYT+HT

Finn2012

	Let	Let+PD0332991
N	81	84
CBR%	44	68
PFS mo	7.5	26.2*
OS mo		NR
HR	0.32 (%95 CI: 0.19-0.56)	

